



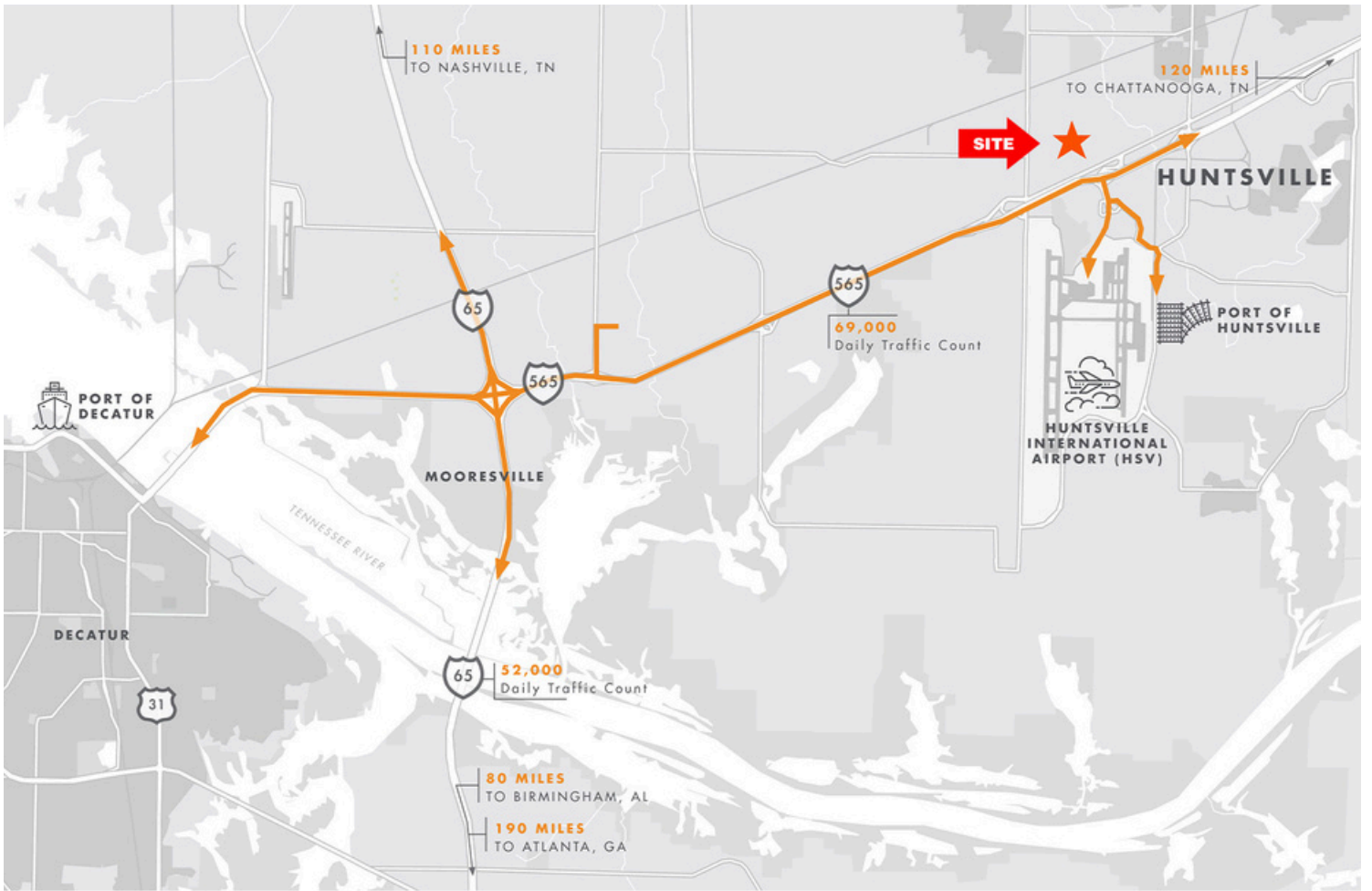
# COUNTY LINE

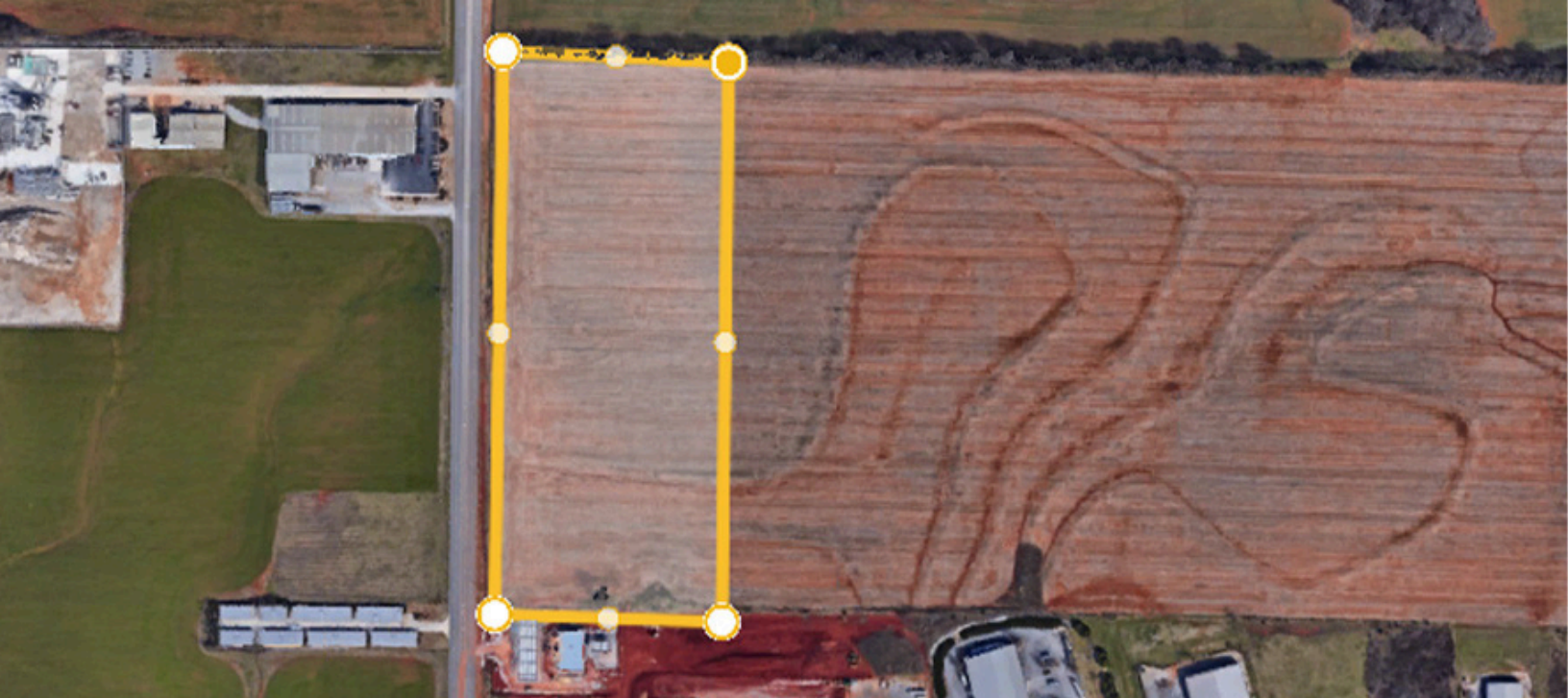
**MADISON, AL**



[www.thewestmorelandcompany.com](http://www.thewestmorelandcompany.com)







# PROPERTY DESCRIPTION

---

Situated in a growing retail corridor on County Line Road with excellent visibility and accessibility. This property is a prime parcel of land ready for a variety of commercial uses with 1,344' of frontage on County Line Road in the heart of Madison.

**Address:** County Line Road, Madison, AL 35758

**Improvements:** Build-to-suit

**Lot Size:** +/- 17 Acres

**Zoning:** M-1 Restricted Industrial

**Parcel:** 16-04-19-0-000-003.000

**County:** Madison

*"The images shown above are for illustration purposes only and may not be an exact representation of final construction."*



# TWC

THE WESTMORELAND COMPANY



**WESTMORELAND@WESTCO.US**  
**256 539 5533**

**200 RANDOLPH AVENUE**  
**HUNTSVILLE, AL 35801**